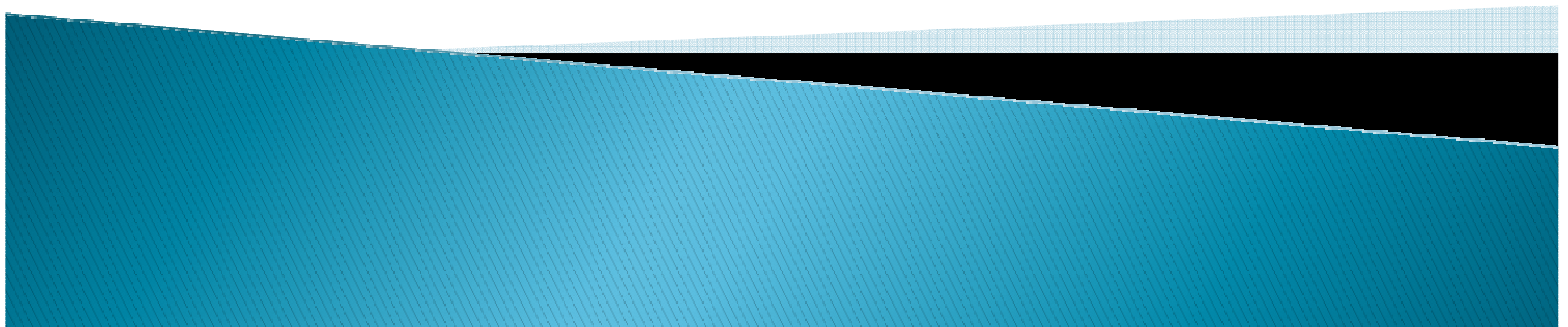



Lutheran church Vanderbijlpark

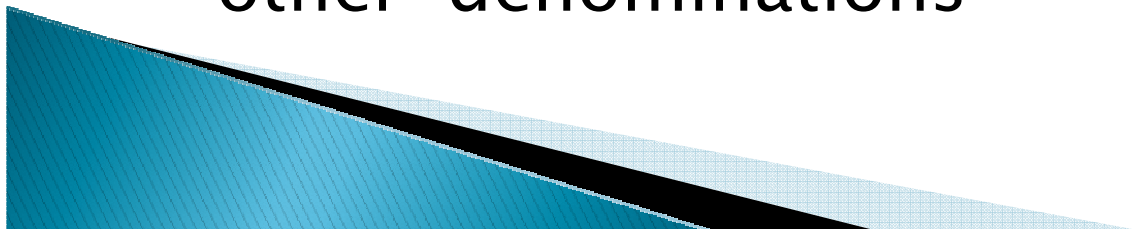
Wings for Life
School for Special Education



The story briefly:

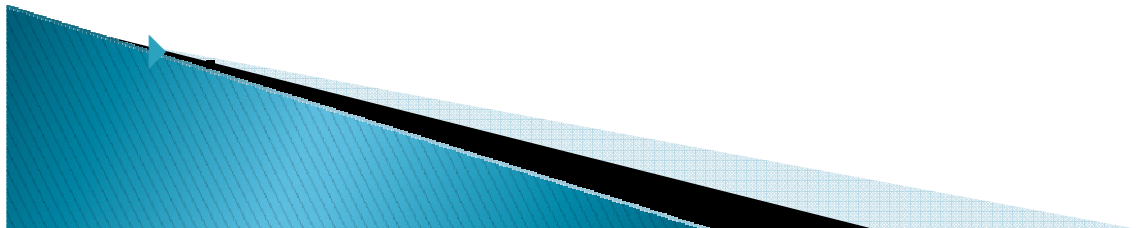
- ▶ This is God's story
 - ▶ We planned to start an English pre-school with a difference
 - ▶ The difference – Include children with special needs
 - ▶ God had much bigger plans
 - ▶ We realised that the support for special needs was lacking
 - ▶ One learner with special needs in Jan 2006, three in March. Starting 2007, we had seven learners and by the end of that year we had waiting list with sixteen learners
- 

- ▶ the need for a primary school was obvious –
- we applied for registration at the education department
- Then registration as NPO, SEC 21 and 18a status
- ▶ In this all we had many challenges – money, skills, some congregation members to get on board etc..
- ▶ God provided far above our expectations– this grew bigger than we ever dreamed, people that we did not know supported and became involved and even congregations of other denominations

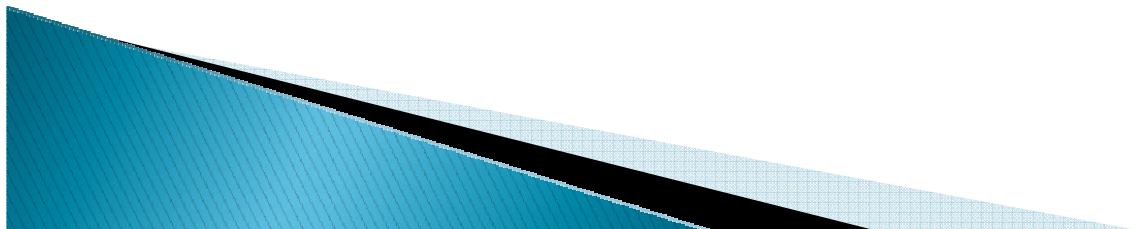


Relationship to the congregation

- ▶ The church council was on board
- ▶ Some ask – “For What?”
- ▶ Slowly the congregation realised that the work was having a influence on the community
- ▶ Today the congregation is proud to be part of the project
- ▶ The congregation has become more sensitive to people with special needs and also different behaviour. Children with special needs are accepted in the congregation
- ▶ Congregation is more aware of other peoples needs and more open and more prepared to share



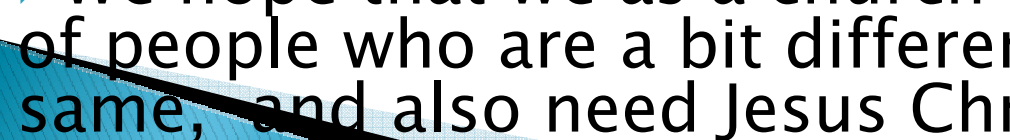
- ▶ A few families from the school have joined the church. We hope more will follow
- ▶ We lost some members because they did not support the project but we also gained new members because they were inspired with the outreach project.
- ▶ Some of our school children have joined our youth work. Our church children needed to adapt to having special needs kids in their midst but they have become very accommodating



Relationship to other churches:

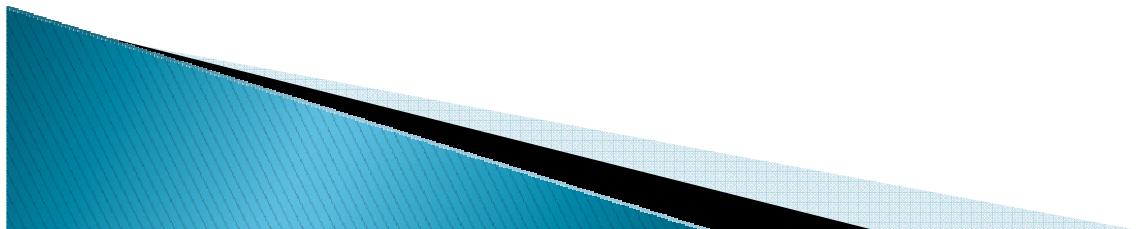
- ▶ other churches in our community became supportive, they prayed and supported in concrete ways.
- ▶ the community is much more aware of the Lutheran church

Relationship to our church:

- ▶ Lusca has supported us in the beginning, for which we are very thankful.
 - ▶ Elcsa (N.T) in the beginning played a background role.
 - ▶ The Elcsa (N-T) have become much more aware of the project in the congregations, especially after we presented it at the synod.
 - ▶ We hope that we as a church will be more aware of people who are a bit different, but also the same, and also need Jesus Christ
- 

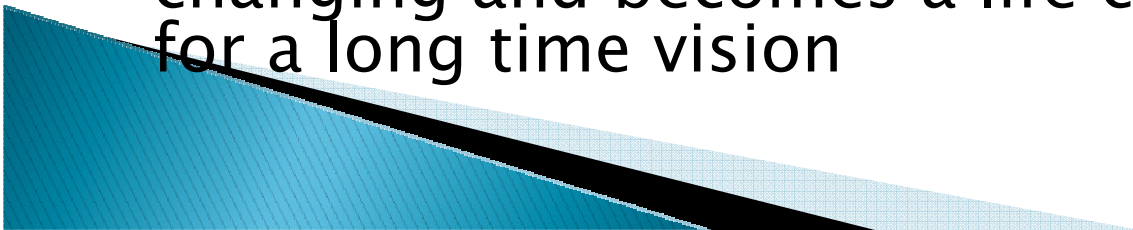
Influence on the community

- ▶ We give hope and support for 56 families
- ▶ Slowly there are some people who's attitude towards church is changing in a positive way
- ▶ More awareness towards autism in the community
- ▶ The school is a symbol to the community of acceptance and perseverance
- ▶ Many have asked about the Lutheran church and their beliefs



Tips for future projects

- ▶ It must be God who starts the project. He will show the need in the community and give you a burden for it
- ▶ Be obedient, God's plan is not always the same as ours
- ▶ You need to work as a team. One vision different gifts to support each other
- ▶ Sell this vision to the congregation but there will always be people against it
- ▶ Make sure about legal aspects
- ▶ You need to be patient, it took us three years before we could start
- ▶ A calling that becomes your passion is often life changing and becomes a life calling, be prepared for a long time vision



- ▶ There will be difficulties, do not give up.
- ▶ Endurance !There are times when you will ask– “is it all worth it?”
- ▶ Trust God for provision
- ▶ You have a big responsibility and be aware that you will make mistakes and are not perfect
- ▶ People will not always support the project
- ▶ Share the vision that God has given you

Praying for guidance is the most important

