

BACKGROUND OF THE LUCSA HIV AND AIDS PROGRAMME

**‘I CAME, THAT THEY MAY HAVE LIFE –LIFE IN
ABUNDANCE.’**

JOHN 10:10

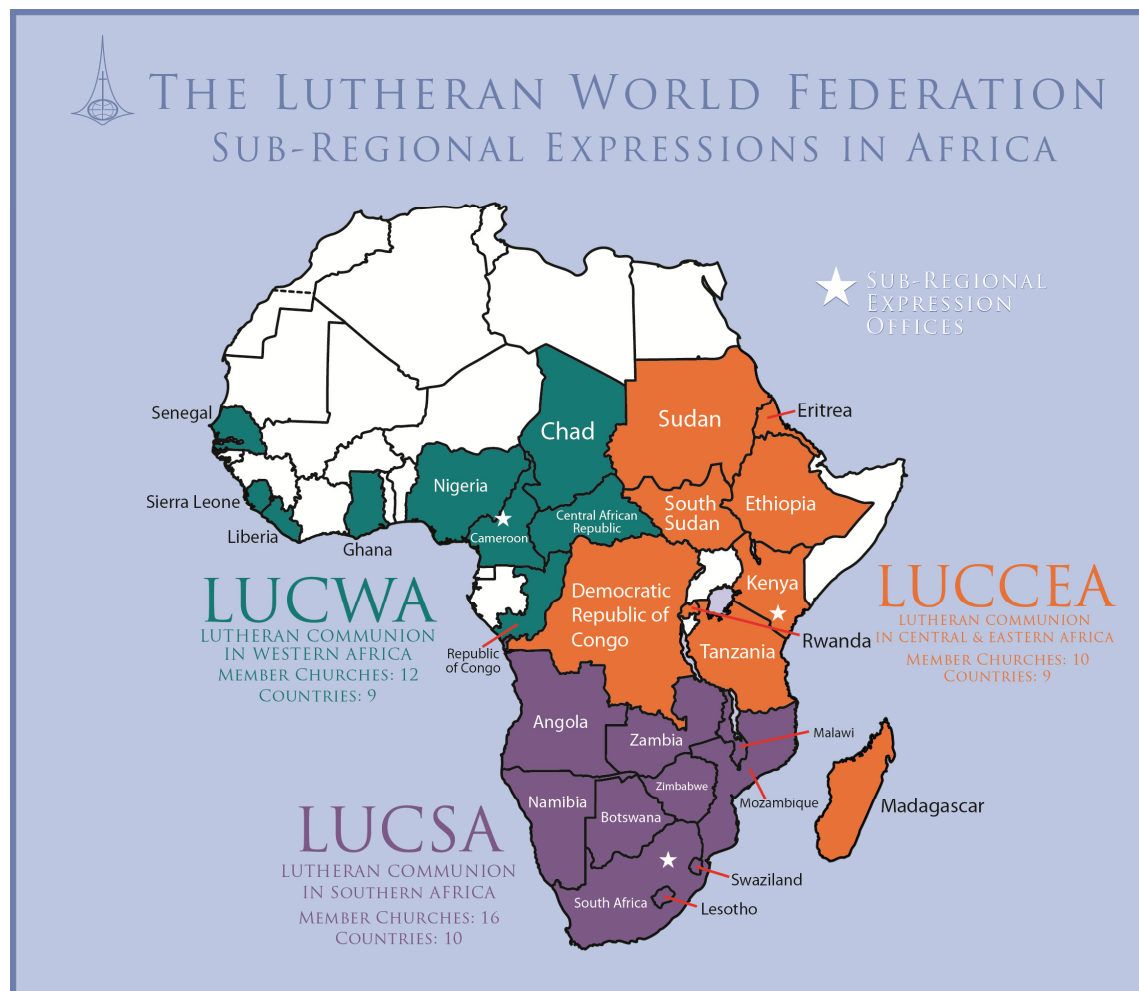
2014



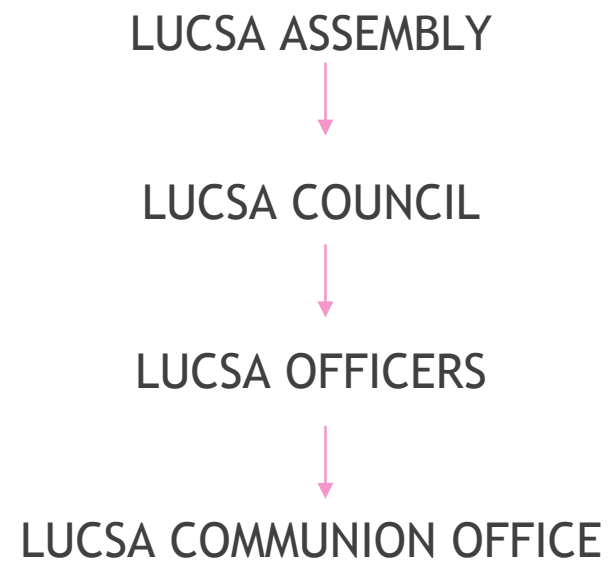
LUCSA
HIV & AIDS
DESK

BACKGROUND OF THE LUCSA HIV AND AIDS PROGRAMME

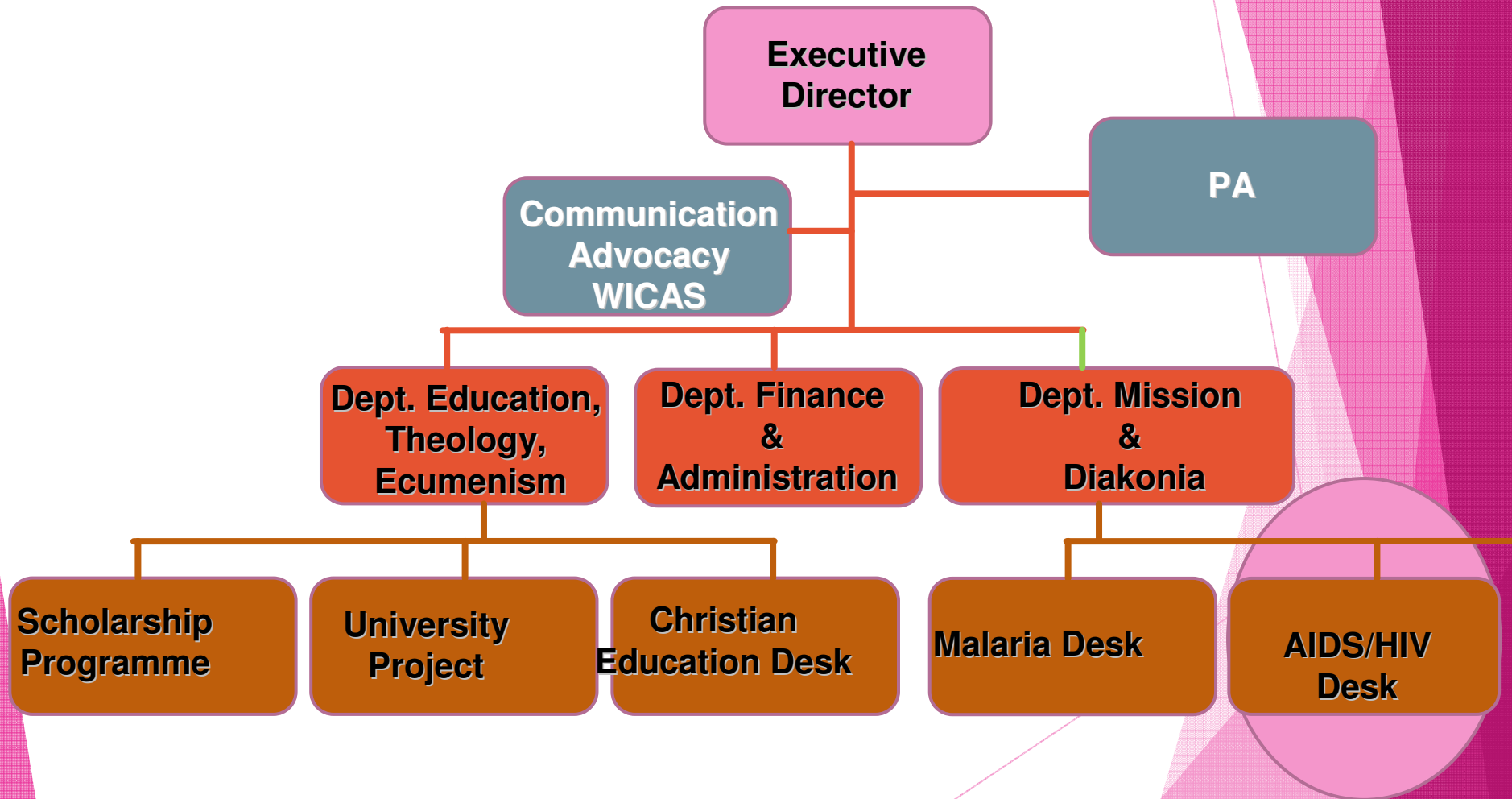
- ▶ WHO IS LUCSA?
- ▶ LUCSA is a voluntary non-profit making fellowship of 16 autonomous and independently constituted Lutheran AND Moravian Churches in 10 countries in Southern Africa.
- ▶ ESTABLISHED IN 1963 as FELCSA
- ▶ LUCSA was the legal successor in May, 1991 And was formerly recognised as one of the three sub regional expressions of the LWF in 2010 (LWF ASSEMBLY STUTTGART)
- ▶ Has a communion office in JHB



GOVERNANCE



.....





- ▶ Pan African Meeting in Nairobi 2002; 'Compassion, Conversion and Care' and Breaking the Silence
- ▶ LUCSA meeting in Botswana 2003
- ▶ LUCSA Mandated to build the capacity of her member churches to respond in a relevant, effective, efficient and sustainable manner.

▶ THE PROGRAMME WAS CALLED 'THE LUCSA AIDS ACTION PROGRAMME. (LAAP)

LAAP ORGANOGRAM-2013...





- ▶ Phases1:2003-2005; CAPACITY BUILDING(MID TERM EVALUATION)
- ▶ Phase 2: 2006-2008 CAPACITY BUILDING(strategic plan 2008-2012)
- ▶ 2008 END OF PHASE EVALUATION
- ▶ Phase 3 2009-2011 Bishops, Deans, Theological Training Institutions and RP's were introduced to the concept of mainstreaming.
- ▶ Phase 4:2012-2014: mentorship of member churches to mainstream HIV and AIDS, TB, Gender, Malaria and development principles.

STRATEGIC PLAN 2013-2017

KRA'S

HIV DESK

- ▶ INSTITUTIONAL DEVELOPMENT
- ▶ INTERNAL AND EXTERNAL MAINSTREAMING
- ▶ EMPOWERMENT OF VULNERABLE PEOPLE
- ▶ MONITORING AND EVALUATION

MALARIA DESK

- ▶ INSTITUTIONAL DEVELOPMENT
- ▶ PREVENTION AND CONTROL
- ▶ TREATMENT AND CARE
- ▶ SUSTAINABLE LIVELIHOODS

EMPOWERMENT OF VULNERABLE GROUPS

- ▶ AS PER IDENTIFIED NEED.
- LAAP supports member church initiatives according to the approved schedule in the criteria for funding inclusive of but not limited to:
 - Care and support
 - Couple communication
 - Home based care
 - Training of peer educators etc.

How to access the grant?

- ▶ Apply to LUCSA using the grant application form.
- ▶ The application has a chance to succeed if:
 - All the sections have been completed correctly
 - Endorsed by the HIV and AIDS programme Resource Person.
 - Endorsed by the church leader or his representative.

Please note

- ▶ LUCSA can only support two projects per member church per annum
- ▶ Stewardship and accountability is of paramount importance.

- ▶ Networking partners

GWG on HIV and AIDS, Inerela+, EHAIA, and all relevant
AIDS Service Organisations

- ▶ Funding partners

- ▶ include LWF; ELCA; BftW.

Contact details

► LUCSA OFFICE: 011 979 7142

info@lucsa.org

LAAP Coordinator: 083 226 2100

Mrs. V. Mzezewa : verna@lucsa.org; vthandi11@gmail.com

LAAP Officer : 071 019 8975; 072 832 4679

Busi Dube : siwehlophe@yahoo.co.uk; busi@lucsa.org

LAAP Office : 060 313 2178

Beatrice Moyo: beatrice@lucs.org; seebmoyo@yahoo.com